

# CHRYSALIS

A MEMORY PLAY

Written by **Gwyneth Strobe**  
Directed by **Michael Mansfield**

*Go on, **child**. You may **break**, consumed,  
but you will come out **transformed**.*

**January 25, 26, 27 at 7:30 pm**

**January 28 at 2 pm**





*The Kennedy Center American College Theater Festival, part of the Rubenstein Arts Access Program, is generously funded by **David M. Rubenstein.***

*Special thanks to The Harold and Mimi Steinberg Charitable Trust for supporting the John F. Kennedy Center for the Performing Arts' Kennedy Center American College Theater Festival.*

*Additional support is provided by The Honorable Stuart Bernstein and Wilma E. Bernstein; and the Dr. Gerald and Paula McNichols Foundation. Kennedy Center education and related artistic programming is made possible through the generosity of the National Committee for the Performing Arts.*

This production is entered in the Kennedy Center American College Theater Festival (KCACTF). The aims of this national theater education program are to identify and promote quality in college-level theater production. To this end, each production entered is eligible for a response by a regional KCACTF representative, and selected students and faculty are invited to participate in KCACTF programs involving scholarships, internships, grants, and awards for actors, directors, dramaturgs, playwrights, designers, stage managers, and critics at both the regional and national levels.

Productions entered on the Participating level are eligible for invitation to the KCACTF regional festival and may also be considered for national awards recognizing outstanding achievement in production, design, direction, and performance.

Last year more than 1,500 productions were entered in the KCACTF involving more than 200,000 students nationwide. By entering this production, our theater department is sharing in the KCACTF goals to recognize, reward, and celebrate the exemplary work produced in college and university theaters across the nation.

Hollins Theatre Institute-Mill Mountain Theatre  
Academic/Professional Partnership

**Learning so we can do... Doing so we can share...  
Sharing so we can learn.**

We are thrilled with the ongoing development of the dynamic partnership between the Hollins Theatre Institute at Hollins University and Mill Mountain Theatre. The cornerstone of which is the Winter Festival of New Works that takes place in January and February each year. Our productive relationship has its roots “back on the mountain” where Hollins Theatre Professor Jim Ayers incorporated students and faculty into his strategy to build a dynamic professional theatre company that has just celebrated its 50th anniversary. New works helped put Mill Mountain Theatre on the national map, and now with the winter and summer residencies of the Kennedy Center award-winning Hollins Playwright’s Lab, the “new works beacon” from Roanoke shines brighter than ever. The partnership also encompasses new internship and post-graduate opportunities for our undergraduate students as well as an open exchange of faculty and guest artists throughout the year. Thank you for being part of the exhilaration that comes from participating in live theatre!

Onward....



Todd Ristau, Playwright's Lab Director  
Hollins Theatre Institute



Ginger Poole, Producing Artistic Director  
Mill Mountain Theatre



For more information on the Hollins-Mill Mountain partnership go  
to: [www.hollins.edu/theatre/partnership](http://www.hollins.edu/theatre/partnership)

# Hollins Theatre Land Acknowledgement

In the spirit of truth and reconciliation, we acknowledge the Tutelo/Monacan people, as well as other Indigenous peoples, whose land on which Hollins University now resides. We recognize their historical and ongoing connection to this land, this water, and this air. We do this to pay respect to the Tutelo and Monacan Nations, and to their elders past, present, and emerging. We hope to inspire greater curiosity among non-Native peoples about the land on which they live, to halt the erasure of Indigenous history, and to encourage support of Indigenous communities both locally and globally.

*Because words without action have little impact, we suggest these organizations, available as links in our digital playbill, as a way to stay informed and show your support of Indigenous people:*

[National Indigenous Women's Resource Center](#)

[Native American Rights Fund](#)

[The Warrior Women Project](#)

[Partnership With Native Americans](#)

[Tribes in Virginia](#)

[Monacan Nation](#), [Rassawek Timeline](#), [Rassawek Saved](#)

*The Monacan Indian Nation has ancestral heritage in the Blue Ridge Mountains dating back over 10,000 years. Today, they continue to “honor, preserve, and uplift the rich heritage, culture, and sovereignty of the Monacan people.” In 2018, the Commonwealth of Virginia approved the development of Rassawek (the tribe's sacred and historic capital) for the US military. In 2022, led by the Monacan Nation, activists saved Rassawek from development, and there are ongoing plans for preservation and education regarding the landmark. Follow the links above to learn more about the Monacan Nation and saving Rassawek.*

# Hollins Theatre Labor Acknowledgement

Hollins acknowledges the enslaved and their descendants, some of whom work on this campus today; we must recognize the full contributions made by African Americans throughout our history, as well as those made by our current Black students, staff, and faculty. We owe it to ourselves and our community to learn from our history and its legacies and recognize how they shape our daily lives. And then we must take action toward restorative justice. It is only when we do this that we can truly lift our eyes as our motto commands us and call Hollins whole. [Learn more](#) about the work of the Hollins University Working Group on Slavery.

January 25, 26, 27 at 7:30 pm | January 28 at 2 pm

# *Chrysalis*

by Gwyneth Strobe

directed by Michael Mansfield

*Go on, child. You may break, consumed,  
but you will come out transformed.*

Faced with a life-altering decision, Mirage chooses to confront her own memories of childhood and come face to face with the past versions of herself that she had shed many years before. Weaving together altered memories, illusions, and gripping realities, this piece illuminates the process of healing from past trauma and starting anew.

## **Cast:**

Mirage: Amber Voeller

Young Mirage: Kathryn Gibson

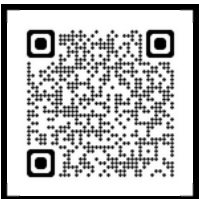
Little Mirage: Megan Corbett

Man: Alex Voeller

Father: David Colatosti

Mother: Kelly Anglim

Husband/Asher: Christian Watts



*The play runs approximately 90 minutes and will be performed without an intermission.*

*Scan the QR code for the Dramaturg's note. See the last two pages of the playbill for **content warnings**.*

# Playwright



**Gwyneth Strobe** is a playwright, actor, and the Producing Manager of the Hollins Theatre Institute. Holding a B.A. in Theatre from James Madison University and an M.F.A. in Playwriting from Hollins University, she prides herself on being an interdisciplinary artist who amplifies the stories of women. Gwyneth's thesis play, *Chrysalis*, won the David L. Shelton full-length play award for excellence in playwriting at the Kennedy Center American College Theatre Festival, Region IV. Her recently produced works

are *In Bloom* at Tesseract Theatre, *To Bathe or Not to Bathe* at Missouri S&T, and *Grace and the Ghost* at Pipe Dreams Studio Theatre.

---

# Director



**Michael Mansfield** is an adjunct faculty member at Hollins Theatre and has worked with a wide variety of local arts organizations. The list includes Mill Mountain Theatre, Showtimers, Opera Roanoke, Gamut, Roanoke Ballet Theatre, Roanoke Children's Theatre, Little Town Players, Off The Rails, Hollins University, and Virginia Western Community College. He has acted for stage, film, television, and a CD-ROM movie. Michael's most recent roles include Creon in *Antigone*, Robert in *Proof*, Bob in *Grave*

*Mistakes*, and he was lucky enough to be a part of both the Roanoke and New York productions of *Helvetica* and *Adverse Effects*.

# PERFORMERS



**Kelly Anglim** (*Chrysalis*) received a B.A. in theatre from James Madison University where she studied Shakespeare, children's theatre, musical theatre, and film. Since graduation she has worked with numerous companies throughout Virginia and was most recently seen as Bea Bottom in *Something Rotten* at Showtimers Community Theatre. Previous credits include *Arcadia*, *Doubt*, and *Antigone* with Off the Rails; *1776* and *The Full Monty* with Renaissance Theatre; and *Twelfth Night, Is He Dead?*, and *The Women* at Showtimers.



**Megan Corbett** (*Chrysalis*) is a seventh grader who has been an actor for seven years. She is part of Mill Mountain Theatre Conservatory and Virginia Children's Theatre Youth Professional Ensemble. Her favorite productions she has participated in are *James and the Giant Peach*, *Secret Garden*, *Madagascar, A Musical Adventure*, *Cinderella*, *Addams Family*, *Velveteen Rabbit*, and *The Sound of Music*. When not busy with rehearsals Megan enjoys babysitting, swimming, and hanging out with her friends. She would like to thank Gwyneth and Michael for giving her the opportunity to be a part of this amazing production.



**David J. Colatosti** (*Chrysalis*) has performed in many productions in southwestern Virginia. Some of his credits include: *Spamalot* (King Arthur), *The Merry Wives of Windsor* (Frank Ford), *Charm* (Hawthorne/Count O), *Crazy for You* (Bela Zangler), *Anything Goes* (Lord Evelyn Oakleigh), *The Lion in Winter* (Henry II), *The Goodbye Girl: the Musical* (Elliot Garfield), *To Kill a Mockingbird* (Atticus Finch), *The Crucible* (John Proctor), *Diary of Anne Frank* (Otto Frank), *The Trestle at Pope Lick Creek* (Dray) and *Annie Get Your Gun* (Frank Butler). David thanks his wife Patricia for her constant support and encouragement.



**Kathryn Gibson** (*Chrysalis*) is so excited to be a part of this show. She is a senior at Salem High School and has been acting with their theatre department for three years. Her favorite roles include: Aunt Ev in *Miracle Worker*, Baby Fiona in *Shrek the Musical Jr.*, and she is also currently working on a production of *Clue* where she'll play Miss Scarlet. She thanks her mother, directors, and castmates for providing her with so much support throughout the play.



**Alex Voeller** (*Chrysalis*) is a professional theatre artist currently enrolled in the M.A. in theatre and new play development program at Hollins University. Although he focuses on acting, Alex has also directed, been a charge artist, and has been building skills in producing theatre projects. When not working, Alex enjoys playing D&D, hanging out with his cat Sonya, and traveling across the world with his wife. He would like to thank Amber and all of his family for supporting him on this crazy journey of life!



**Amber Voeller** (*Chrysalis*) is an actress, singer, educator, props master, and entrepreneur with residency in Roanoke, VA, and Las Vegas, NV. She received her training at Huntington University School of Arts with a B.A. in theatre performance. She has been a theatre professional for 10 years performing in New York, Las Vegas, Chicago, Orlando, and more. She is also a local artist in Roanoke as a music director for RCPS musicals, an alto section leader at South Roanoke United Methodist Church, and featured performer at *Dickens of a Christmas*. When not performing she is teaching young artists her favorite thing! Playhouse Studio L.L.C is her small business where students globally can take fun and engaging theatre classes online or local Roanoke students can learn in person! She would like to thank the Roanoke community, Hollins, and her loving husband.



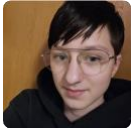
**Christian DeWayne Watts** (*Chrysalis*) is an actor based in Alabama with a B.A. in theatre: concentration in performance from Jacksonville State University. He's honored and blessed to be part of the cast of *Chrysalis*. Christian is always finding and learning ways to grow his craft and to become the professional he wants to be. He is determined in his craft to bring a natural and fresh performance every time he gets to step on stage. He wants to thank Gwyneth Strobe and Michael Mansfield for this amazing opportunity and thanks his friends and family for their big support.



# FESTIVAL DESIGNERS AND STAFF



**Keiko Shimosato Carriero** (*Mask Designer*) is a collective member, actor, designer, co-writer, and director with the Tony Award-winning San Francisco Mime Troupe. Most recently, Keiko appeared in A.C.T.'s West Coast premier of Chris Chens' *Headlands*, and as "Ma" in San Jose Stages' production of Vichet Chums' *Bald Sisters*. She has performed at Berkeley Repertory Theatre, American Conservatory Theater, The Magic Theater, The Aurora Theater, Word for Word, Oakland Theater Project and Center Rep. In 2020 Keiko co-founded "Kunoichi Productions" (Female Ninja productions) innovative, multidisciplinary theatre where she has directed, co-directed and designed costumes for all productions to date.



**Kit Hathcock** (*Assistant Lighting Designer*) is a junior creative writing and theatre major at Hollins University. They have been a part of the costume construction crew for *The Skriker*, *Everybody*, and *Goodnight Moon*. They built props for *Bumble's Big Adventure* and their acting credits include *The Skriker*, *what if shakespeare but memes*, *Above the Waterline*, and *To the Mountains*.



**Hayes Simpson** (*Sound Designer*) (they/he) is a junior theatre major with a minor in creative writing. Hayes previously worked as the QLab Operator for *Goodnight Moon*. Hayes' former acting credits include: *The Skriker*, *what if shakespeare but memes*, *Jupiter Bird*, *To the Mountains*, and *Bumble's Big Adventure*. They are very excited to be participating in this Winter Festival!



**Madeleine Herbert** (*Lighting Designer/Master Electrician*) MFA, lighting design, third year. Ohio University lighting designer: *We are Proud to Present...\**, *Hotel Berry*. Assistant lighting designer: *Twelfth Night*, *Medea*, *Natasha*, *Pierre and the Great Comet of 1812*, *Summer and Smoke*. New York: Lighting designer: *How We Love/F\*ck*, *Worth St. Part 1: Before the Flood*. Other: Lighting designer: Chester Theater Company; *Passover*, Hollins University; *The Picture of Dorian Gray*, *To the Mountains*, Westfield; *The Tempest*, *Parasite Drag*.

*\*denotes upcoming productions*



**Viktor Oler** (*Randi & Roxanne Dramaturg*) is a senior in the class of 2024 at Hollins University. He is a plus-size artist who focuses on queer storytelling. They are pursuing an undergraduate degree in theatre and creative writing. He has been in multiple Hollins productions such as: *The Skriker* (2021), *The Moors* (2022), *The Picture of Dorian Gray* (2023), and more. With his degree, he plans to pursue a career in playwriting, screenwriting, and directing. In 2022 and 2023, Viktor was published by *Gravel Magazine* in his poetry and prose pieces, such as “A Silver Band for Life” (2023).



**Todd Ristau** (*Producer/Props and Costume Coordinator*) has served as program director of the Playwright’s Lab, an M.F.A. graduate program he designed, at Hollins since its launch in 2007. He has an extensive theatre background, with expertise in acting, directing, and design, and holds an M.F.A. from Iowa Playwright’s Workshop. Todd’s work has been performed in theatres across the U.S. and England, including London’s West End. He founded No Shame Theatre in 1986, was Mill Mountain Theatre’s literary associate for six years, and served as the first artistic director of Studio Roanoke. Todd has received numerous honors, including the Kennedy Center Gold Medallion and the Perry F. Kendig Arts and Culture award. Todd is a member of the Dramatists Guild and Literary Managers and Dramaturgs of the Americas.



**Gwyneth Strobe** (*Producing Manager/House Manger & Box Office Mentor*) is a playwright, actor, and the producing manager of the Hollins Theatre Institute. Holding a B.A. in theatre from James Madison University and an M.F.A. in playwriting from Hollins University, she prides herself on being an interdisciplinary artist who amplifies the stories of women. Gwyneth's thesis play, *Chrysalis*, won the David L. Shelton full-length play award for excellence in playwriting at the Kennedy Center American College Theater Festival, Region IV. Her recently produced works are *In Bloom* at Tesseract Theatre, *To Bathe or Not to Bathe* at Missouri S&T, and *Grace and the Ghost* at Pipe Dreams Studio Theatre.



**Mary Zaengle** (*Chrysalis Dramaturg*) (they/she) is a junior at Hollins University, working toward a Bachelor of Arts in theatre. Originally from upstate New York, she has worked on the set build crew, run crew, and other tech positions for several productions at Hollins, including *All The Natalie Portmans* and *Everybody*. Mary has also worked as co-dramaturg on the development and production of the honors thesis production, *The Picture of Dorian Gray*.

# FESTIVAL PRODUCTION TEAM



**Caroline Assia** (*Run Crew/Technical Support*) is a junior theatre major and so excited to be a part of Winterfest! Caroline has previously served as the props coordinator for *Goodnight Moon* and has acted in Hollins productions such as *To the Mountains*, *Everybody*, and *The Skriker*. They hope you enjoy the show!



**Emily Bauer** (*Arts Administration Intern*) (they/them) is a senior theatre major and music minor at Hollins University. They have been involved with a variety of productions at Hollins in a variety of roles, including playing Emilie Vandergaard in *The Moors*, designing costumes for *Bumble's Big Adventure*, and operating puppets for *Goodnight Moon*. They were able to participate in Winter Festival of New Works in January of 2023, and are delighted to have the opportunity to be involved with the program again. They would like to thank the rest of the Winterfest team for their encouragement and support.



**Sofia Craig** (*Sound Board Op*) is a sophomore theatre major. Sofia's recent credits include Harry/Ensemble in *To the Mountains*, costume team for *Bumble's Big Adventure*, and Clarabelle in *Goodnight Moon*. They would like to thank their family and friends for their support!



**Alaya Lewis** (*Randi & Roxanne Stage Manager*) is a junior theatre major and a creative writing minor. Some of Alaya's previous credits include Samuel in *All The Natalie Portmans*, co-director/Riley in *To the Mountains*, and Mona in *Bumble's Big Adventure*. They love new work development and they're excited to be a part of the team! They hope you enjoy the show!



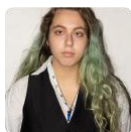
**Michael Mansfield** (*Sound Mentor*) is an adjunct faculty member at Hollins Theatre and has worked with a wide variety of local arts organizations. The list includes Mill Mountain Theatre, Showtimers, Opera Roanoke, Gamut, Roanoke Ballet Theatre, Roanoke Children's Theatre, Little Town Players, Off The Rails, Hollins University, and Virginia Western Community College. He has acted for stage, film, television, and a CD-ROM movie. Michael's most recent roles include Creon in *Antigone*, Robert in *Proof*, Bob in *Grave Mistakes*, and he was lucky enough to be a part of both the Roanoke and New York productions of *Helvetica* and *Adverse Effects*.



**Katie McBride** (*Chrysalis Stage Manager*) is very excited to be part of Chrysalis during Winterfest. She has recently stage managed the Hollins University first-year reading *The Seven Loves of Audrey Munson* and is looking forward to more experience.



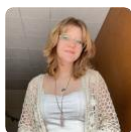
**Sam Mundy** (*Stage Management Peer Mentor/Wardrobe and Properties Manager*) is a junior theatre major. Sam's previous credits include stage management for *Towering Issues*, *I Live to Tell*, and *Goodnight Moon*, Sibyl/Elizabeth in *The Picture of Dorian Gray*, and Agatha in *The Moors*.



**Faolan Timm** (*Run Crew/Technical Support*) (they/he) is a junior theatre and creative writing major at Hollins. Faolan's previous credits include The Skriker in *The Skriker*, Florence Wotton in *The Picture of Dorian Gray*, Anne in *To the Mountains*, Sage and Bumble in *Bumble's Big Adventure*, Harris in *Towering Issues*, and Dish/Spoon in *Goodnight Moon*. They would like to thank their family and friends for their support.



**Alex Voeller** (*Production Manager*) is a professional theatre artist currently enrolled in the MA in theatre & new play development program at Hollins University. Although he focuses on acting, Alex has also directed, been a charge artist, and has been building skills in producing theater projects. When not working, Alex enjoys playing D&D, hanging out with his cat Sonya, and traveling across the world with his wife. He would like to thank Amber and all of his family for supporting him on this crazy journey of life!



**Lynn-Lee Williamson** (*Arts Administration Intern*) (she/her) is a sophomore theatre major at Hollins University. She has been involved in several productions at Hollins, but this is her first time doing arts administration. She is excited to try something new in the theatre world to expand her experience and use the skills she learned from her previous projects. She would like to thank everyone for being so encouraging and teaching her valuable lessons through this process.



**Are you a teacher  
looking for the perfect  
summer professional  
development program?**



CERTIFICATE IN  
**New Play  
Performance**  
[hollins.edu/grad/acting](http://hollins.edu/grad/acting)

M.F.A. IN  
**Playwriting**  
[hollins.edu/grad/playwriting](http://hollins.edu/grad/playwriting)

CERTIFICATE IN  
**New Play  
Directing**  
[hollins.edu/grad/directing](http://hollins.edu/grad/directing)

Our high-intensity/low residency programs allow you to expand your portfolio and upgrade your skill sets with a degree in playwriting or professional training programs in acting and directing. Each summer you'll work with established theatre professionals, build a new network of colleagues, and become part of a collaborative community in a place that feels like your artistic home.

**Call us at (540) 362-6575 or email [hugrad@hollins.edu](mailto:hugrad@hollins.edu) for full details.**

**HOLLINS**  
UNIVERSITY



Playwright's Lab

For more information about our graduation rates, the median debt of students who completed the certificate programs, and other important information, please visit [hollins.edu/gedt-playperformance](http://hollins.edu/gedt-playperformance) or [hollins.edu/gedt-playdirecting](http://hollins.edu/gedt-playdirecting).

**Stay informed about our upcoming events and productions.**



**Hollins Playwright's Lab**



**[www.hollins.edu/academics/graduatedegrees/playwriting-mfa/](http://www.hollins.edu/academics/graduatedegrees/playwriting-mfa/)**

## Hollins Theatre Spring 2024

### ***Vagina Monologues***

produced by Asha-Ashanti Turner and Sara Clark

February 14 at 7:30 pm

### ***Constellations*** (a student thesis production)

written by Nick Payne

directed by Elizabeth McDonald

February 23 at 7:30 pm

February 24 at 2 pm, 7:30 pm

### ***Our Family in the Stars*** (a student thesis staged reading)

written by Viktor Oler

directed by Fae Timm

March 7 & 9 at 7:30 pm

### ***CORPS*** (A Canniballet in Two Acts)

written by Aves Lewis

directed by Lynn-Lee Williamson

March 8 at 7:30 pm

March 9 at 2 pm

### ***Beautiful Noise***

written and directed by Asha-Ashanti N. Turner and Seiya Sessoms

April 12 - 13 at 7:30 pm

### ***The Hollins Living History Project***

written by China Moore

April 20 - 21 at TBA

Stay informed about our  
upcoming performances.



Hollins Theatre



[hollinsutheatre](https://www.instagram.com/hollinsutheatre)



[www.hollins.edu/theatre/](http://www.hollins.edu/theatre/)

**This showcase is made possible in part by  
generous contributions to the New Works Initiative from:**

Anonymous Donors, ATALIK INC, Simon Adkins, Ben Alhelm, Cheryl Amyx, Louis and Suzanne Blair, Doncel Bolt, Martha and Charlie Boswell, Bonny Branch, Sue Braswell, Carrie McCully Brown, Jason Burton, Richard Carter, Chamberlayne Actors Theatre, Judith and Richard Clark, Al Cole, Julia Coles, Kathy and Jim Cramblett, Deidra and Alexander Cruden, Gregory Dale, Shannon Davis, Carmen Diaz, Sandra Dietrick, Corrine Draper, Margie Dube, MB DuMonde, Edmonson County High School, Eric Eidson, Tiffany Faircloth, Leigh Falkner, Darlene Fedele, Kevin D. Ferguson, Richard Fiske, Katie Frank, Anne G'Fellers-Mason, Gene C. Gill, Jason Aaron Goldberg, Neeley Gossett, Yulia Gray, Dale Gregory, Jason Grote, Abeda Groves, Nola Gruneisen, Adam Hahn, Nathan Hahn, Samantha Hahn, Byron Harris, Vickie Haynie, Frieda F. Heatherly, Elizabeth Heffron, Jeremy Holmes, Ursula Hull, Philip Johnson, Kevin Jones Performing Arts Studio, Tom Kennedy, Patrick Kennerly, Mr. and Mrs. Calvin King, Laura and Mark King, Cathy Koon, Diana Chapman Lang, Kolin Lawler, Elizabeth Lawrence-Couture, Richard Leff and Maura Campbell, Meredith Dayna Levy, LifeWorks, James Lintott, Ken and Shelley Lyons, Mary Kimberly Lunsford, Kim Macher, Robert Macher, Samantha Macher, Guy Mack, Amanda Mansfield, Gene Marrano, Matthew Marshall, Wendy-Marie Martin, Kris Knutsen Marushy, Malcom Matheson III, Theano Mavroidis, Emily McCoy, Lianne Jackson McCray, Ann Muir Moomaw, Bonnie Morrison, Mary Moyers-Lee, Nipomo High School, Dr. Rebecca Osborne, PNC Bank Foundation, Dale and Linda Quinn, Scott Marshall Taylor, Tira Palmquist and Philip Thompson, Sung Min Park, Bev Parsons, Blair Peyton, Emma Pierce, Justin Pinchot, Robert Plowman, Dale and Linda Quinn, Rebecca Quirk, Robert Reiss, Steven V. Rice, Margaret Ristau, Todd Ristau, Roanoke Valley-Alleghany Regional Commission, Jennifer Robinson, Joan Ruelle, Chad Runyon, Carl Sahlin, Julia Sanford, David Schwingle, Cheryl Snodgrass, Elsa Solender, Terry and Frank Southerington, Gwendolyn Stolzenbach, Stonehall Farm, Shane Strawbridge, Scott Taylor, The Tannery, Debra Torlone, University of Great Falls, Hannah Urry, Ruben Vellekoop, Ashley Fuller Ward, Daryn Warner, Jeri Weiss, Sean Wellengard, Donald Wetherington, Elliot Wheeler, Susan Wheeler, Megan Sloan White, Suzanne Willett, Chris Yoko.

A gift of \$20,000 was made by John Clifford to support productions using the talents of our new certificate training programs for directors and for performers. The gift was made in honor of Al and Barbara Katz, the late Chitra Smith, and the late Dean Herbert Garfinkel, "all pretty good actors, all pretty prone to direct to good effect in normal life, and all damned fine people."

**We also want to take a moment to thank all our advertisers, and every organization or business which put one of our posters up in their windows or on their walls. Every ad and every poster is a tremendous demonstration of support. We hope you'll return that support by being a customer and thanking them for keeping live theatre alive!**

There are many ways to support the New Works Initiative, which is an important investment in the cultural and economic life of our community. Please consider a charitable gift, corporate sponsorship, in-kind donation of a service, volunteering for an event, placing an ad in our playbill, or hosting a fundraiser. (Ad rates range from \$10 to \$100 per production). There are many ways to contribute, please contact us and ask us how you can help!

*thank  
you!*



# Special Thanks

**Hollins University and the Hollins Theatre**

**Richie H. Waggoner and Hollins University Athletics**

**Isabel L. Folck and Wyndham Robertson Library**

**Rob Bessolo and Roanoke College**

**Mill Mountain Theatre**

**New Works Advisory Board**

**Our Students, Faculty, and Guest Artists**

# Content Warnings

***Chrysalis***: This play involves neglect, grooming, sexual abuse, substance abuse, language, and violence.

\*\*Additional details *may* be included in the Dramaturg's note.

Below are all the publishers below that have published Hollins playwrights!



**BOLD!  
INNOVATIVE!  
NEW PLAYS!**

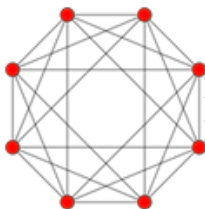


*your ideas + my ideas = your play*

YouthPLAYS



**APPLAUSE**  
THEATRE & CINEMA BOOKS



Polychoron  
Press





**DON'T SETTLE FOR  
JUST A GRADUATE  
PROGRAM.** Find your  
*artistic home in a  
collaborative,  
creative community.*

## **M.F.A. in Playwriting**

with concentrations in dramaturgy, directing, performance,  
plays with music, plays for youth, and applied theatre  
[hollins.edu/grad/playwriting](http://hollins.edu/grad/playwriting)

## **M.A. in Theatre and New Play Development**

[hollins.edu/grad/playwriting](http://hollins.edu/grad/playwriting)

---

*Certificates in:*

**New Play Dramaturgy**  
[hollins.edu/grad/dramaturgy](http://hollins.edu/grad/dramaturgy)

**New Play Directing**  
[hollins.edu/grad/directing](http://hollins.edu/grad/directing)

**New Play Performance**  
[hollins.edu/grad/acting](http://hollins.edu/grad/acting)

**HOLLINS**  
UNIVERSITY



**Playwright's Lab**

*Expand your portfolio, upgrade your skills, and build your network during our  
high-intensity/low-residency intensive summer sessions.*

Call us at (540) 362-6575 or email [hugrad@hollins.edu](mailto:hugrad@hollins.edu) for full details.

*Learning so we can do. Doing so we can share. Sharing so we can learn.*

**Stay informed about our upcoming events and productions.**



**Hollins Playwright's Lab**



[www.hollins.edu/academics/graduatedegrees/playwriting-mfa/](http://www.hollins.edu/academics/graduatedegrees/playwriting-mfa/)